

# Building Modern Intranets on Liferay

Full Feature List for Intranets

 Liferay



# A Solution to Empower the Entire Workforce

As enterprises face a seismic shift in remote working and global teams, leaders must strategize as to how they can enhance the daily operational experience of their employees, no matter where they are working from.

Liferay's modern intranet solutions help:

- Increase employee engagement
- Deliver intuitive experiences
- Lift employee productivity
- Enable users to work effectively in the midst of changing work trends

Use a flexible and extensible digital experience platform, Liferay DXP, to build effective intranets that will unite and equip your entire workforce.

Liferay DXP is used by more than 1,800 enterprises across the globe and has proven features for multilingual and localization support out-of-the-box, ensuring that you can truly meet your teams' needs today as well as in the future when your company grows.

# Key Benefits

## Robust Support for Global Teams

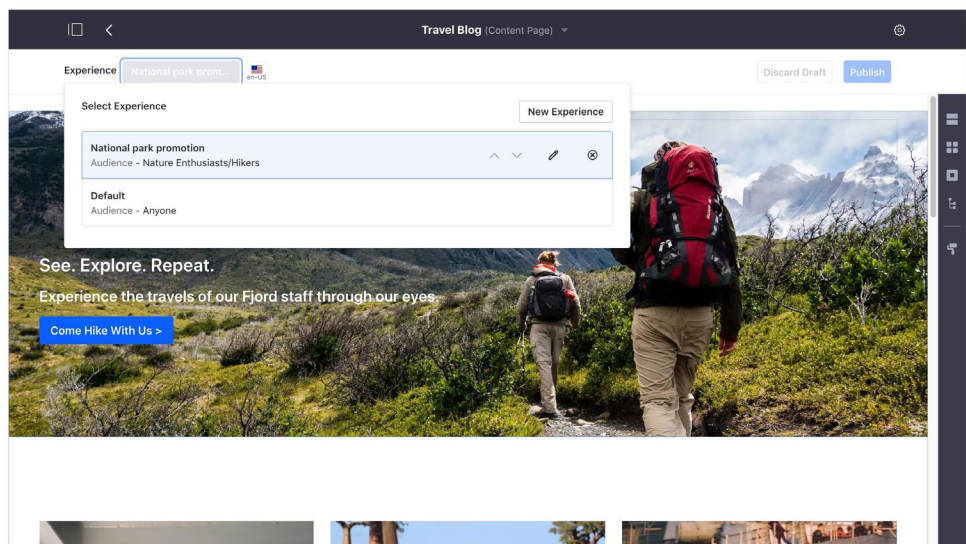
Organize large, complex teams with robust features for localization and personalization. Empower each with their own sites, manage access through user authentication and granular permissions, and create custom roles to support different use cases.

## Empower Remote Workers

Enable your employees to do their job and be productive out in the field, in transport and at any remote work location through any device by leveraging Liferay DXP's multichannel capabilities, such as a mobile-responsive platform, a library of components that allows you to launch native and hybrid mobile applications without recreating code. Open up access from any device by leveraging headless APIs and Liferay DXP's flexible architecture for integration with a wide range of applications and other systems.

## Decrease Search Time

Cut through the noise and surface the most important information for each employee. Leverage a full, enterprise-grade CMS with support for all rich media and file types. Make it easier to find content with dynamic tagging and Elasticsearch integration, plus audience targeting and role-based content delivery.



Personalization and role-based content delivery to tailor communication to each employee.

## Leverage One Seamless Platform

Build your digital workplace solution on a leading digital experience platform, which ensures you get quality features for designing exceptional employee experiences, plus out-of-the-box applications for collaboration, social networks, blogging and more that work perfectly together because that's what they were built to do.

Administrators can leverage a full CMS to quickly create content and ensure that it's always up-to-date, plus features for tagging and targeting content to make sure the right employees see it. Teams can also access knowledge bases, forums and blogs to facilitate open and transparent communication, as well as to capture tacit knowledge that otherwise gets lost in emails and third-party chat software.

## Customize Engaging Employee Experiences

Everything from the theming to the UI is customizable in Liferay DXP, allowing your organization to create an experience that truly suits your employees.

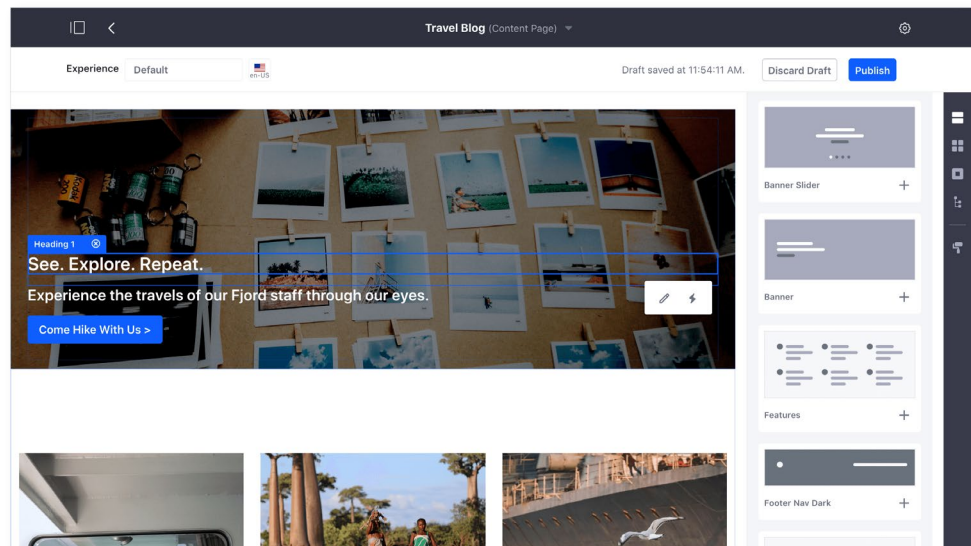
## Gain Insight into Intranet Performance

When paired with Liferay Analytics Cloud, organizations can further uncover key insights that prove the effectiveness and ROI of their intranet.

# Using Liferay DXP to Build a Modern Intranet

## User Interface

Employee experiences are the foundation of exceptional customer experiences. Liferay DXP comes packed with features to create a tailored intranet that matches your company's unique needs.



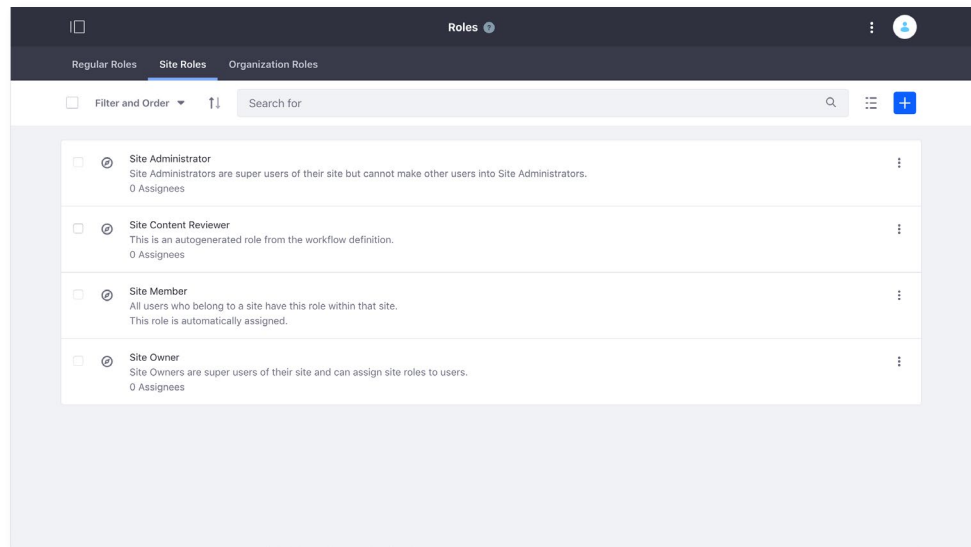
Leverage a robust theming and layout system or use other tools and environments to create themes.

<b>Integrations</b>	Liferay offers out-of-the-box connectors for Liferay DXP and Sharepoint, Documentum, and Google Drive. Maintain your existing IT investments while still taking advantage of Liferay's modern platform.
<b>Dashboards</b>	Consolidate existing systems in personalized dashboards so that employees have a one-stop shop for everything they need to get work done. Applications in Liferay DXP can also be added through drag-and-drop to any page for further customization.

<b>Customizable and extensible UI</b>	The Liferay UI tag library makes it easier for developers to implement commonly used UI components, with tags that make your markup consistent, responsive, and accessible. Customize and build on Liferay DXP's default UI so that usability is tailored to your employees' preferences.
<b>Customizable Branding</b>	Leverage a robust theming and layout system so you can apply branding to your intranet. Liferay DXP provides an easy-to-use tool called the Liferay Theme Generator that helps automate the theme development process, but you can use other tools and environments, such as Liferay's Dev Studio or Blade CLI's Theme Template to create themes.
<b>Role-Based Content Delivery</b>	Liferay DXP allows for multiple user types to access a single URL and see a unique page view depending on the user's role, group, organization or personal preferences. Administrator controlled and user customized, Liferay DXP provides a central platform for determining enterprise content policy, including who can edit and publish content, files, media, and applications.
<b>Segmentation</b>	Create audience segments based on user behavior, user attributes, and other custom fields. All content and applications on the platform can leverage these segmentation capabilities to provide personalized experiences. This greatly improves users' ability to specify content delivery in real-time based on advanced segmentation rules provided in Analytics Cloud.
<b>Content Recommendations</b>	Automated personalization of content based on a user's past behavior powered by Analytics Cloud integration, with behavior-based segmentations and interest-based content recommendations.
<b>Charts</b>	Liferay DXP includes a library of charts to visualize crucial data such as corporate-wide goals, team KPIs and common performance metrics. Add these to employee dashboards with a drag-and-drop application so employees can view data in real time.
<b>Mobile Responsive</b>	Sites created on Liferay DXP are mobile responsive out of the box. Liferay DXP's CSS framework is designed to work with browsers on all platforms.
<b>Screens</b>	Liferay Screens is a collection of fully native mobile components that speed up the development of mobile apps. Reuse functionality you've already developed for desktop browsers without having to recreate code.

# User Management

Manage large, complex user groups that align with your organizational structure.



Create custom roles according to your company's structure and hierarchy.

## Single Sign On and Authentication

Unite all the corporate sites your employees use under one login and password. Liferay supports these Identity Providers and more: Single Sign On (SSO) servers, SAML, LDAP, Facebook, Google, OpenId, Open Authorization (OAuth), and Shibboleth.

## Localization and Multilanguage Support

Liferay DXP includes out-of-the-box support for many languages, including right-to-left language support. To create localized versions of content, users simply choose the language or region they want to localize for, which generates a duplicate of the content that is still tied to the original asset. This does two things. First of all, it ensures that content is being localized consistently, so that you don't need to worry about content changing drastically from region to region. Second, the content localizations are still tied together. Users can toggle between localizations within the content management interface, keeping all of the versions in a single location for easier maintenance.

<b>Roles</b>	Create custom roles according to your company's structure and hierarchy. You can create and assign as many roles as you need at the global, site or organization level. Together with permissions, roles are a powerful way to ensure that each user has the right access to creating, managing and publishing content on your site.
<b>Permissions</b>	Permissions are incredibly granular in Liferay DXP. Site administrators have the ability to define whether a role can view, update, configure, or take other actions on every single part of Liferay DXP. Permissions can be applied at a global level or to individual sites, enabling further control.
<b>User Groups and Organizations</b>	Create custom user groups and organizations to align with your departments and project teams. This allows you to create individual spaces for different content projects so teams can collaborate more easily.

## Collaboration

Facilitate team communication across departments, geographies, and time zones.

<b>Knowledge Base</b>	Display professional documentation, guides, and internal policies with Knowledge Bases. Add custom workflows to content authoring so that articles go through the proper approval process before publication. Knowledge Bases also have article templates to help users follow a common outline, as well as a tool that surfaces user suggestions to improve articles.
<b>Message Boards</b>	Message Board is a full-featured forum application that is fully integrated into Liferay DXP. Gamify engagement with user rankings and achievements that increase as employees comment and answer questions.
<b>Forms</b>	Design, publish, and manage forms with a simple-to-use drag and drop interface. Create forms for everything from business process automation to replacing complex paper applications. Validate data entered, apply conditional rules, prepopulate fields, authenticate users, and more.



<b>Workflow</b>	Design workflows with a drag-and-drop designer, then assign them to different content types. This enables you to require tasks and approvals to be completed before content can be published, allowing for greater control over what content is pushed out to your customers.
<b>Blogging Platform</b>	Liferay DXP includes a full blogging platform supported by applications like Recent Posts to help you dynamically publish them across your site. Blogs also include several display templates out of the box, such as card views or list views.
<b>Sites and Child Sites/User Spaces</b>	Give teams or individuals sites of their own, with public and private pages to control access.
<b>Secure File Sharing</b>	The Liferay Sync app provides real time document synchronization on desktop and mobile for your team. Liferay DXP also includes WebDAV functionality so users can access shared assets through browsers.

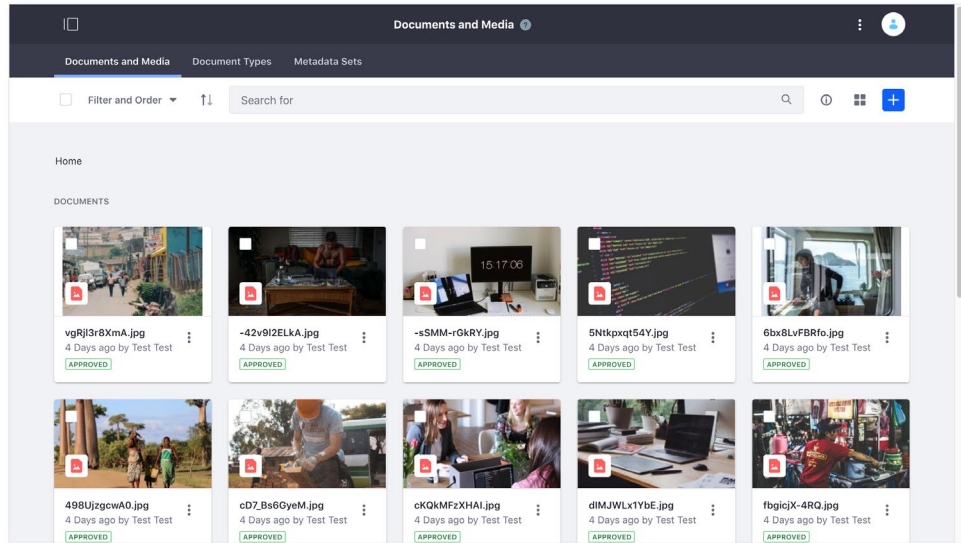
## Social Network

Liferay DXP provides several features and applications for creating a social network that matches the experiences your employees are used to seeing on other social media sites.

<b>Calendars</b>	Create shared or personal calendars with configurable options for email notifications, time zones, managing resources such as room reservations, and more.
<b>Announcements and Alerts</b>	Broadcast updates across sites or target announcements to specific roles. The Alerts and Announcements applications include configuration options such as flagging announcements as important and scheduling when to expire content.
<b>Communication</b>	Connect with users across departments with social network features such as @ mentions, follows, and electronic business card exports.

# Digital Asset Management

Leverage a full-featured Digital Asset Management system so that employees can save on time spent searching for the information they need.



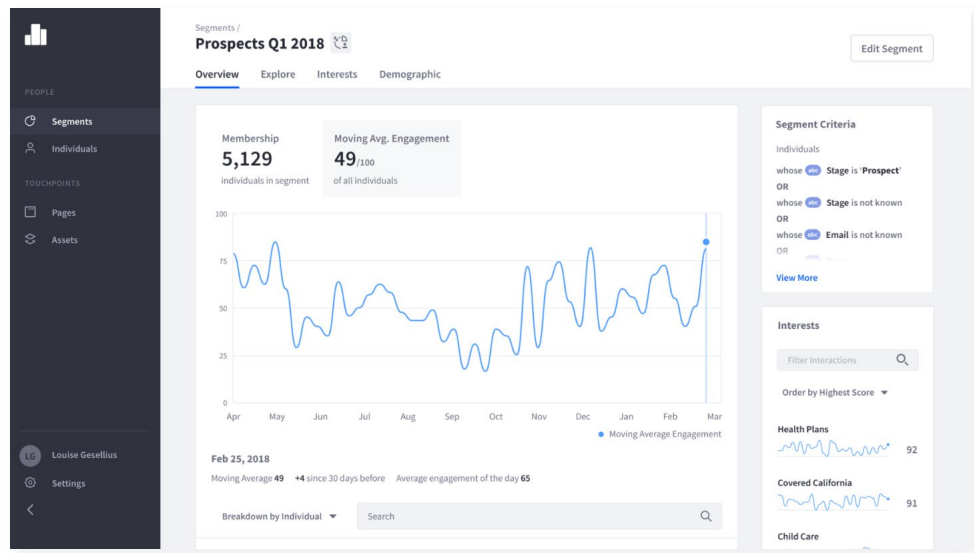
Pictures, videos, spreadsheets, slide presentations and more can be stored in and shared from the Document Library.

<b>Site Content Sharing</b>	Share content across child and parent sites. Administrators of child sites can use all the structures, templates, categories, application display templates, and more from any parent site that allows for it.
<b>P2P Document Sharing/Asset Sharing</b>	Allows sharing documents and media assets with registered users to increase collaboration for instances where multiple users need to work on a single asset.

<p><b>Documents and Media Library</b></p>	<p>Pictures, videos, spreadsheets, slide presentations, and more can be stored in and shared from the Document Library. Document Library instances can be scoped to a Liferay DXP instance, site or page, so you can work with files where they're relevant.</p> <p>Administrators can create their own custom metadata sets and document types with language familiar to users. For example, financial reports, surveillance videos, and so on can be defined in a way that makes sense for the business functions of the content (e.g., author, reporting period, etc.).</p> <p>You can access the Document Library from your computer's file manager via WebDAV. WebDAV stands for Web-based Distributed Authoring and Versioning. It's a set of methods based on HTTP that allows users to create, edit, move or delete files stored on web servers. WebDAV is supported by most major operating systems and desktop environments, including Linux (both KDE and GNOME), Mac OS, and Windows.</p>
<p><b>Auto-Tagging</b></p>	<p>Leverages third-party machine learning services to provide personalized experiences and improve the findability of assets by automatically adding tags to images and documents upon upload.</p> <p>Features include:</p> <ul style="list-style-type: none"> <li>• Image Auto-Tagging: Tag providers available for images are TensorFlow, Google Cloud Vision, and Microsoft Cognitive.</li> <li>• Web Content/Document Auto-Tagging: Tag providers are OpenNLP and Google Natural Language.</li> <li>• Auto-Tagging API: Tag any asset with any service, for your use case by leveraging an API built for extending auto-tagging functionality.</li> </ul>
<p><b>Dynamic Tagging</b></p>	<p>When authoring web content, the metadata field allows you to create and add dynamic tags. These tags can be leveraged for search, so that users can quickly find the content they're looking for, or in applications like Asset Publisher to show the topics for content articles.</p>
<p><b>Elasticsearch</b></p>	<p>Tag web content, documents, message board threads, and more to facilitate faceted search across your site, powered by out-of-the-box integration with Elasticsearch.</p>

# Analytics

With your Liferay DXP subscription, you have access to a 90-day free trial of Liferay Analytics Cloud which empowers organizations to gain visibility into key insights that prove the effectiveness and ROI of their intranet. Companies can also integrate Liferay DXP with other popular analytics solutions, such as Google Analytics or Tableau.



Visualize customer data through segment and individual profiles.

## Liferay Analytics Cloud

**Customer Profile Analytics:** Integrate customer data from multiple sources to create in-depth analytics and known users. Additionally, gain B2B insights with Account Profiles and ABM data.

**Page Analytics:** Measure page performance and understand audience behavior patterns by day and time.

**Traffic and Path Analytics:** Filter traffic types and visualize a customer path to easily identify key traffic sources.

**Asset Analytics:** Track and visualize engagement levels for forms, blogs, documents, media, and other content.

**Custom App Analytics:** Measure performance for custom development on Liferay DXP.

## Other Integrations

Liferay DXP provides fields to easily add a Google Analytics ID or Matomo (formerly Piwik) script in order to leverage these tools. Other third-party tools can also be easily integrated through customization.

# Moving Forward

## Request a Customized Demo

Talk to a Liferay expert for a customized intranet demo to see how a digital workplace solution built on Liferay can help solve your unique business challenges.

[Schedule a live demo >](#)

## Globally Connecting with a Digital Workplace

See how Coach used Liferay to create its corporate intranet, to give employees a single consolidated mobile-friendly source for all their content and news and set a foundation for the company's digital transformation.

[Watch the case study >](#)



Liferay makes software that helps companies create digital experiences on web, mobile and connected devices. Our platform is open source, which makes it more reliable, innovative and secure. We try to leave a positive mark on the world through business and technology. Hundreds of organizations in financial services, healthcare, government, insurance, retail, manufacturing and multiple other industries use Liferay. Visit us at [liferay.com](https://www.liferay.com).

© 2020 Liferay, Inc. All rights reserved.