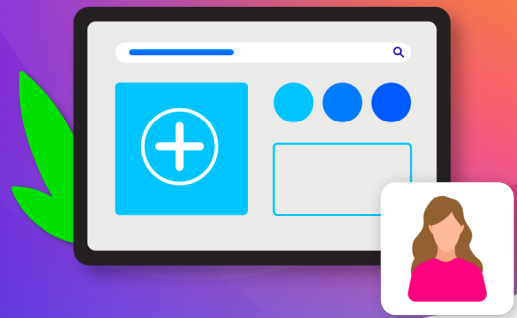


Data Modeling, Process Definition, and Business Logic

Empower business users to
compose digital experiences using
low-code/no-code capabilities



With Liferay's low-code/no-code capabilities, business users can quickly compose and launch new applications, capture user data, and streamline business processes without having to write a single line of code or wait for developers to build and test solutions for them. By leveraging these capabilities, power users can also eliminate repetitive tasks so they can build applications easier and faster.

Benefits



Build and deliver completely integrated applications without having to write code or deploy modules.



Quickly launch simple and complex multi-page forms for surveys, applications, online approvals, and other functions.



Easily enforce business processes with a workflow engine that allows users to define, submit, review, and approve required operational tasks.

Core Features

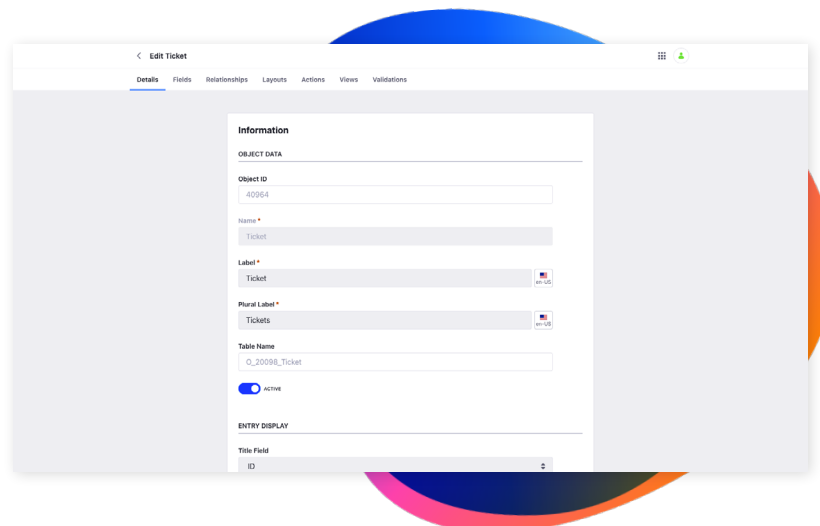
Objects

Liferay Objects empower advanced users to extend the capabilities of Liferay DXP, build business applications, and deliver more robust digital experiences. With Liferay Objects, users can create and manage real database models, including defining fields and managing object relationships. They can also configure how to collect and organize their data and how to display it to end users.

Additionally, Liferay Objects are fully integrated with existing Liferay DXP frameworks, such as Workflows, Headless, Asset, and Permissions, so that you can automatically incorporate these time-saving components in your custom applications.

By modeling data with Liferay Objects, your power users can perform a number of different development tasks faster and more efficiently, including:

- Modeling and managing custom objects.
- Executing CRUD (Create, Read, Update, Delete) operations.
- Adding documents to a Document Library.
- Extending Liferay's out-of-box capabilities.
- Adding custom data validations.
- Adding custom actions that are triggered automatically.
- Sending notifications to users.
- Creating experiences on display pages using our auto generated Collection Provider.
- Using Liferay search capabilities, such as Blueprints.
- Adding data through our auto-generated headless APIs.



- Pre-populating databases with legacy data.
- Syncing data regularly with third party systems using Job Scheduler.

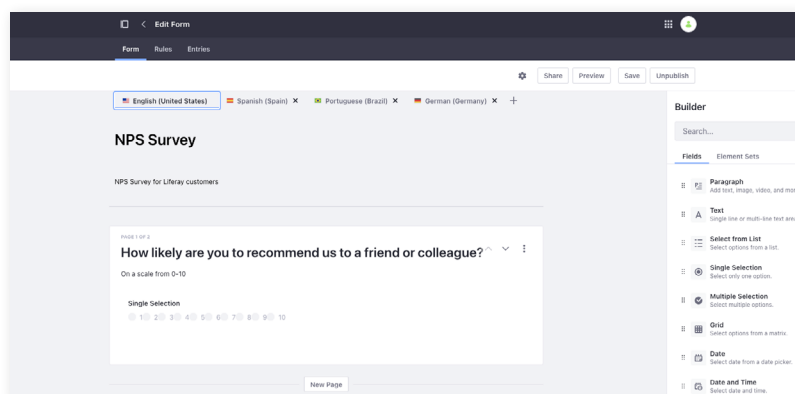
Forms

The Liferay Form application gives you the ability to quickly create forms for a wide range of uses, including surveys, job applications, and registration forms. For example, you can use the application for simple one or two question surveys (or polls), to complex, multi-page, applications containing custom rules.

Some of the core features in our form application include:

- Drag and drop positioning of fields.
- Confirmation pages that display once a user has submitted a form.
- Reusable Element Sets that allow users to quickly add a set of fields to their forms, such as standard fields for address information.
- Standalone Publication that enables users to share forms via email or through a URL.
- Support for poll configurations that let users submit an answer and view partial results.
- The ability to store data directly in an object.
- Duplication of forms so users can start a form from a draft rather than creating one from scratch.
- Ability to populate field lists from a REST data provider (for example, a list of countries).
- Conditional fields which give you the ability to create dynamic forms where the fields change depending on the answers provided by your site visitors.
- Integration with workflows so you can route a form for approval after a user submits it.

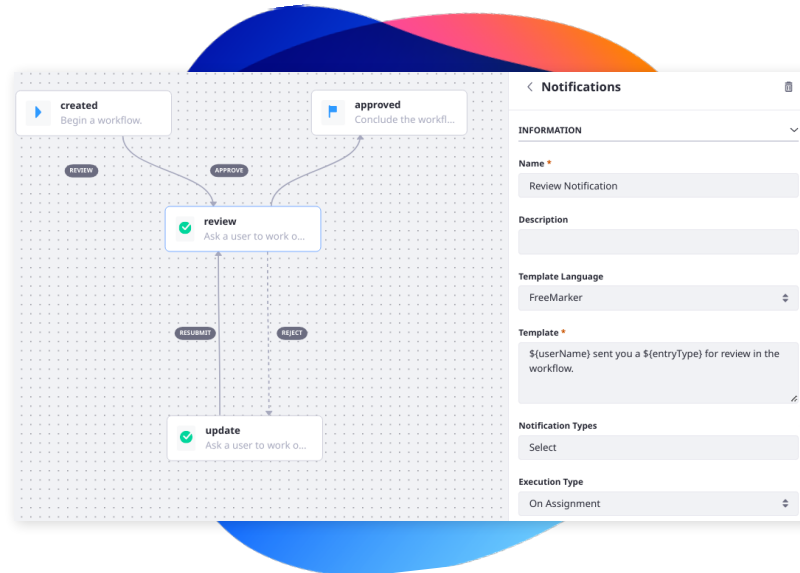
You can also add additional workflow functionality to your forms to support different business processes, such as a checkout process for scheduling conference rooms.



Workflows

The Workflow application makes it possible to define any number of business processes/workflows, and then publish and manage them through a portal interface. Liferay DXP includes a workflow engine that allows users to review and approve content, such as blogs, articles, and wikis, before they publish them and make them visible to end users. The workflow application includes:

- Single review capabilities out-of-the-box for workflows that only require one approval.
- Multi-review functionality that lets you build more complex workflows with multiple reviewers. For example, you can use multi-review workflows to set up a support ticket process that routes your support tickets through a series of different reviewers for resolution.
- Process builder workflow designer, which is a graphical interface for creating workflow process definitions. The workflow designer makes it easy to define and see all the tasks, reviews, and programmatic actions that should take place in your specific workflow.
- A Metrics function to measure Service Level Agreements (SLAs) in a workflow process. This enables you to use a dashboard to track the time it takes to complete an entire workflow, as well as the individual tasks within your workflow, so you can quickly see if the terms of your SLA are being met by assignee, process status, or process step.



Liferay makes software that helps companies create digital experiences on web, mobile and connected devices. Our platform is open source, which makes it more reliable, innovative and secure. We try to leave a positive mark on the world through business and technology. Hundreds of organizations in financial services, healthcare, government, insurance, retail, manufacturing and multiple other industries use Liferay. Visit us at [liferay.com](https://www.liferay.com).